

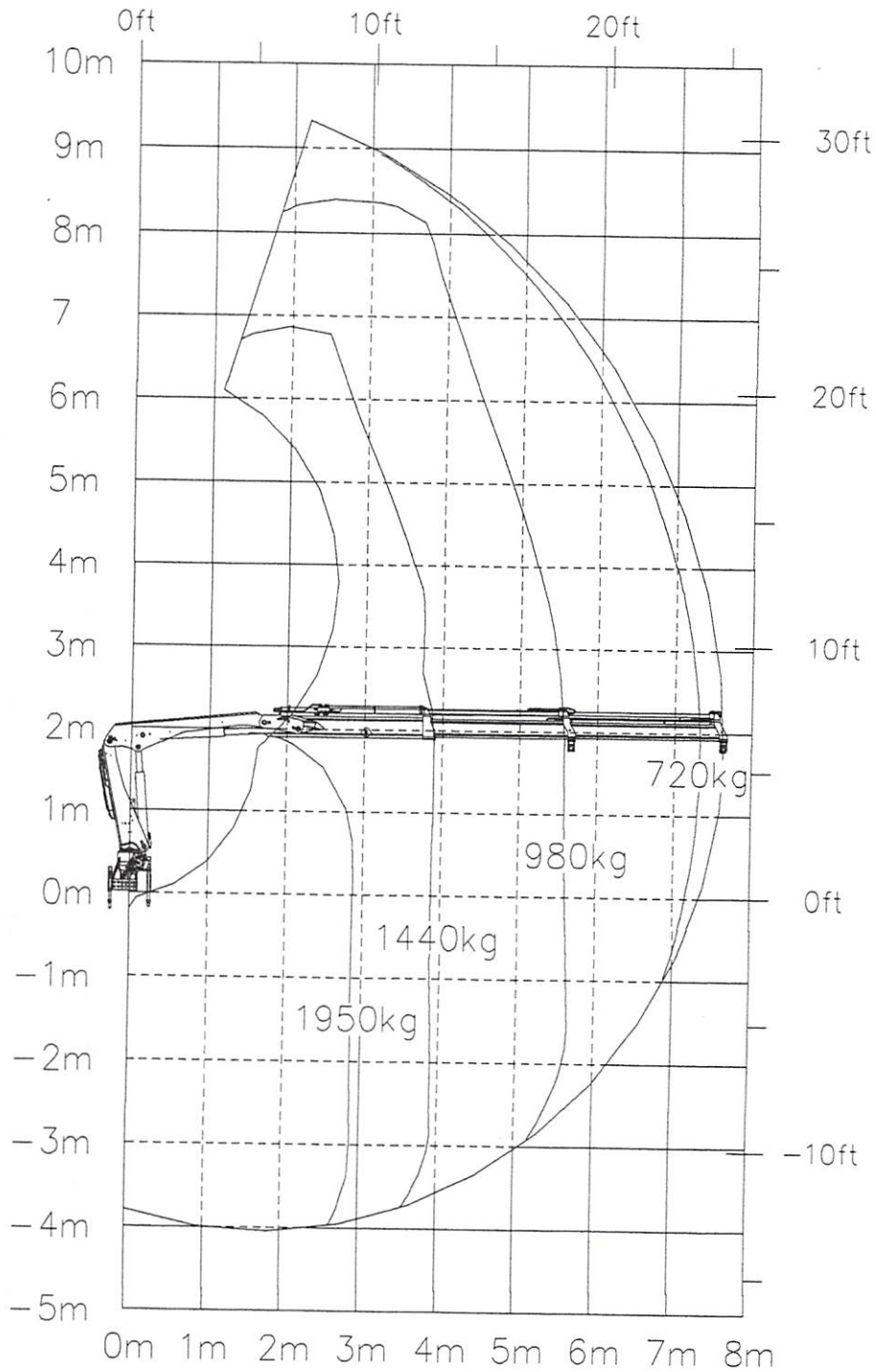


SEA CRANE

Doc No.	DES - 410
Page	5 / 13
Date	2006. 09. 0

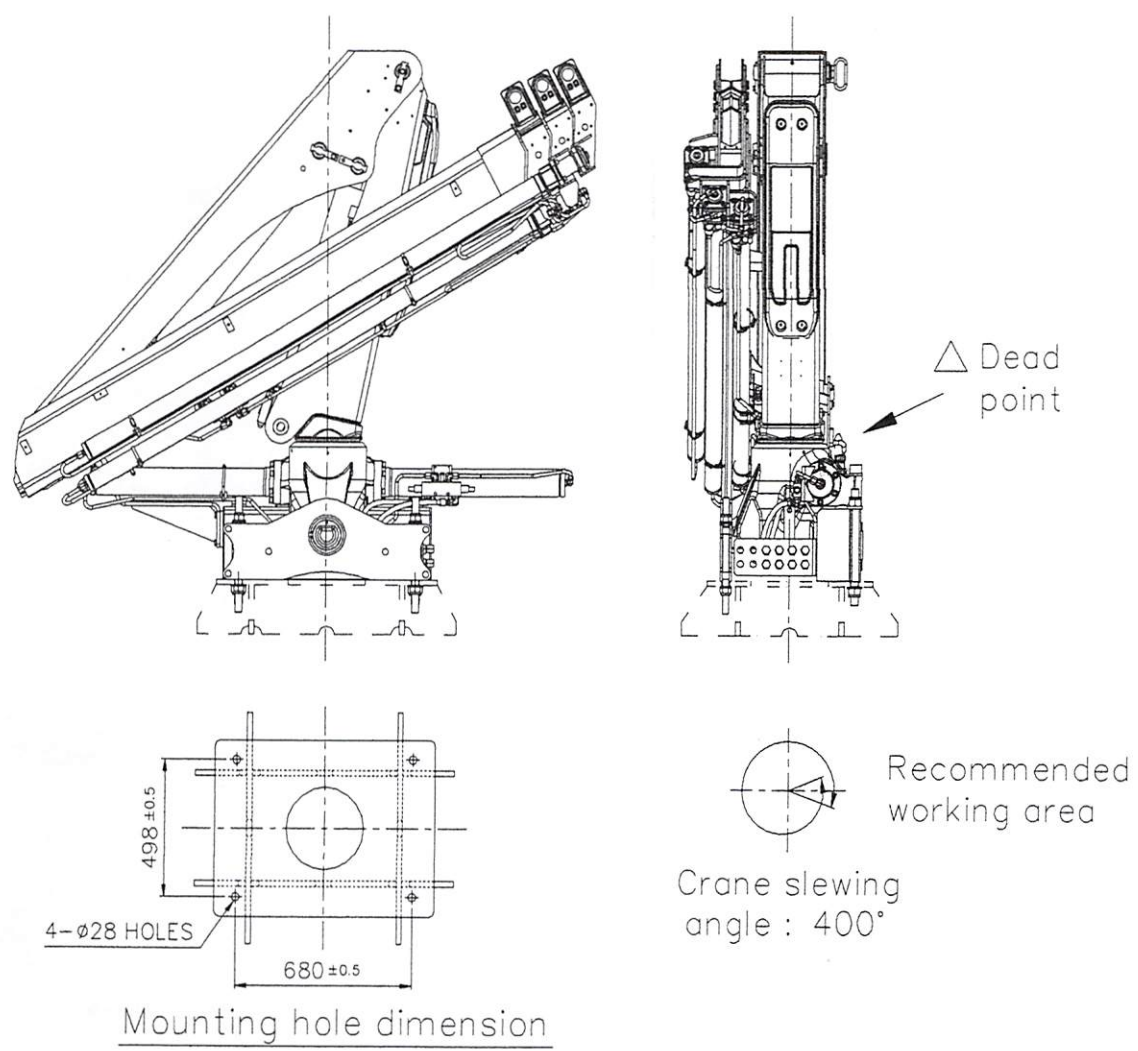
Hiab 061-2

Lifting capacity



★ Note: We reserve the right to change technical specification without prior notice.

Hiab 061 Installation data



FIXING KIT - Supplied with the standard crane

MAX. force at any holding down bolt due to total moment	Hiab 061-1	7,927 Kg	
	Hiab 061-2	7,980 Kg	
	Hiab 061-3	8,121 Kg	

Description	Spec	Material	Q'ty	Remark
BOLT, HEX. HEAD	M27 P3.0 L420 (12.9T)	SCM435	4ea	Tightening torque : 160 kg.m
WASHER, PLAIN	M27 (d28, D44 t4)	HSWR-4	8ea	
NUT, HEX.	M27 P3.0 L22	SCM435	8ea	

★ Note: We reserve the right to change technical specification without prior notice.

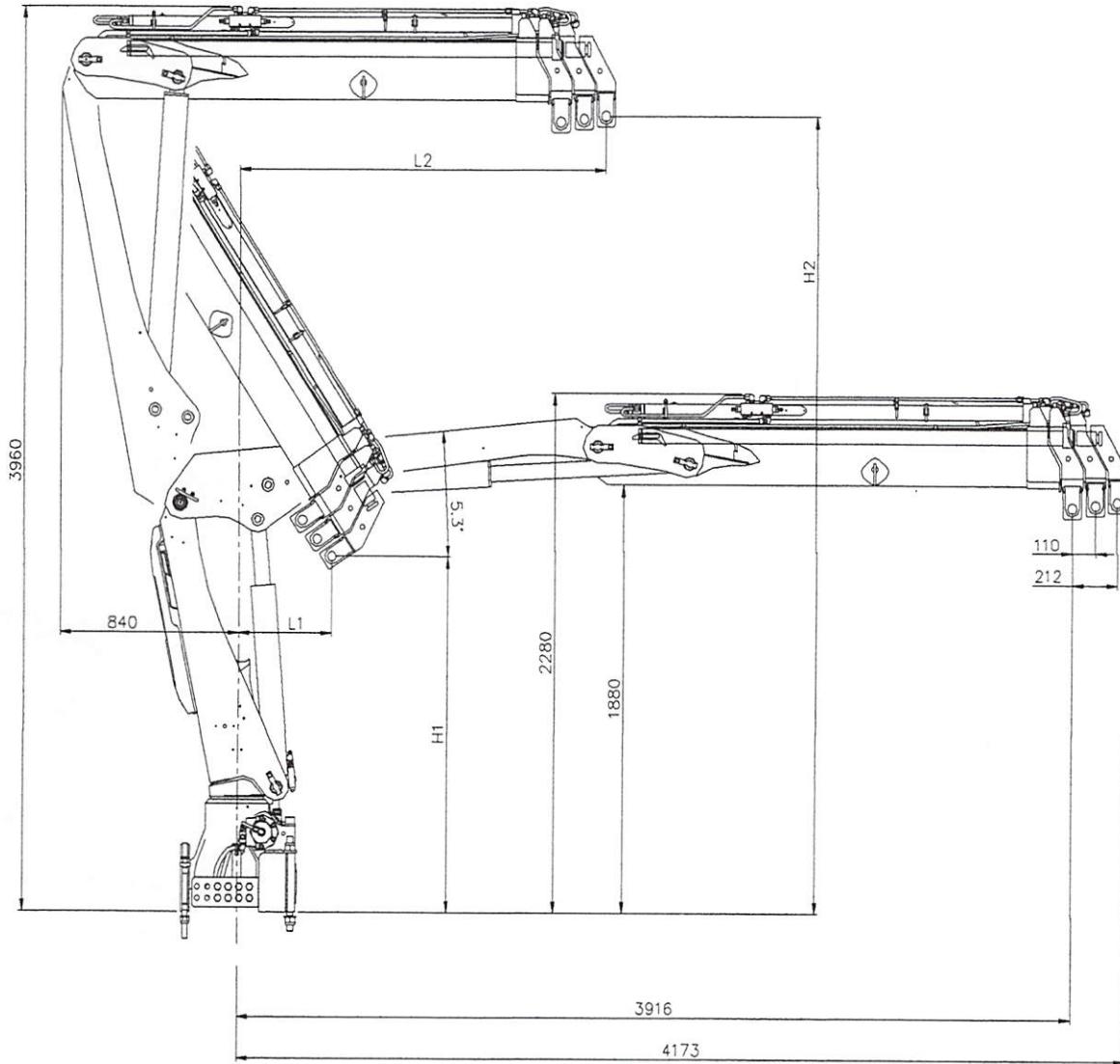


SEA CRANE

Doc No.	DES - 410	
Page	3 / 13	
Date	2006. 09.	0

Hiab 061

Dimension



	L1	H1	L2	H2
HIAB061-1	300	1725	1506	3463
HIAB061-2	370	1638	1615	3475
HIAB061-3	440	1560	1718	3488

★ Note: We reserve the right to change technical specification without prior notice.